

„Grow as many
hyperlocal plants
as possible.“

Marco Tidona
Inventor and director at aponix



aponix GmbH
Im Neuenheimer Feld 583
69120 Heidelberg
Germany

+49 179 2005702
hello@aponix.eu
www.aponix.eu



aponix modular living WallSystem

urban cultivation systems /
soil-less or substrate based

Made in
Germany

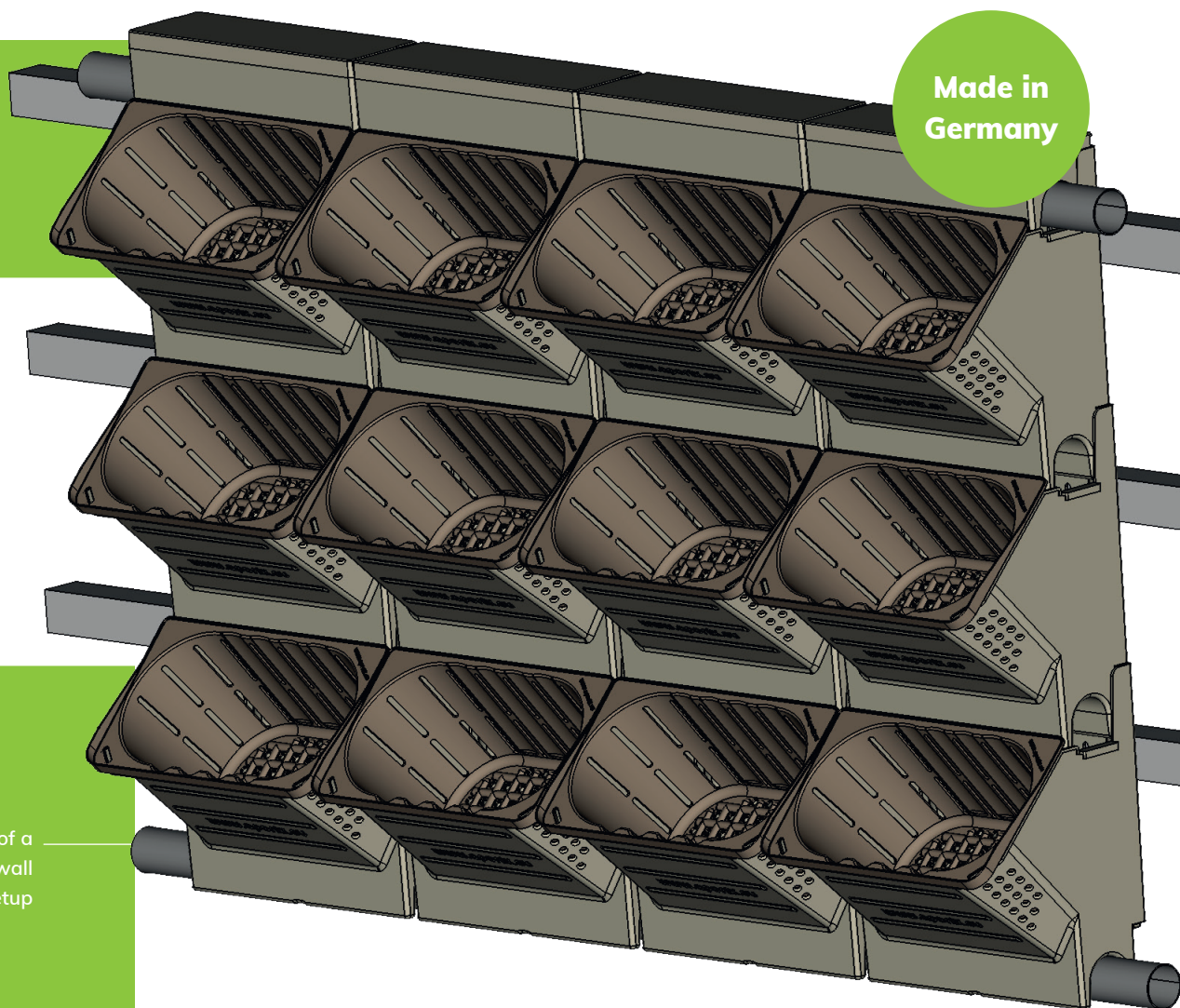
aponix provides usable, flexible, robust and simple vertical platforms to set up urban farming and planting installations based on modular solutions.

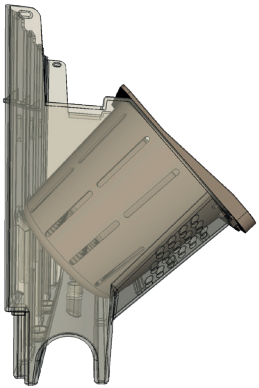
There are still too many unused walls and fences that can be used as cultivation area for more plants in your urban area. The aponix living WallSystem is focusing on long term integration into public spaces and buildings as well as private spaces with maximum maintainability by separating plant and substrate from the actual mounted wall system.

Working through integration partners

Components are regarded as infrastructure building blocks for urban farming. aponix collaborates with product partners who design and market their own solutions and integration services based on aponix components independently.

Example of a
living wall
system setup





Modular living WallSystem

Modules

- Arranged in rows and columns.
- Are mounted onto horizontal rails.
- Hold each other like shingles.
- Can retain liquid without touching substrate.
- Irrigate vertically through modules by internal overflow.

Pot Insert

- Holds plants and substrate separate from mounted module system.
- Air thinsulation to prevent overheating of substrate.
- Sized like 2 standard herb pots for quick installation.
- Pre-grow young plants on flood tables, exchange any time.

Configurable

- Flat wall surface required to cover a rectangular shape.
- Arrange in any number of rows and columns.
- Irrigation via standard 32 mm PVC pipe with emitters in top row.

Areas of application

Indoor vertical gardens

and decorative atmospheric back to back installations in public buildings and office space.

Outdoor urban wall decoration

and farm and plant setups used as insulation against heat and more urban bio-diversity.

- Drainage into 32 mm PVC pipe with holes in bottom row.
- Optional intermediate drain and fresh irrigation in between very high columns.
- Type of irrigation: recirculating or drain-to-waste.
- Application: indoor and outdoor.
- Set plant types for maintainability, location and substrate properties.
- Liquid retention in each module.
- Optional metal trellis insert.

Metrics:

- Module dimensions: width 23.5 cm, height 21 cm, depth 16 cm
- Liquid retention per module: 0–250 ml
- Weight planted and watered: 1.5 kg to max. 5 kg per Module.
- 25 Modules cover 1 sqm.
- Material: PP flame resistant, uv-protected, food safe.



Installation example

